

Canon in D

CANER
BAŞBUĞA

Piano Arrangement

Music by
Johann Pachelbel
(1653 - 1706)

Sostenuto

The first system of the piano arrangement for Canon in D. It features a grand staff with a treble and bass clef. The key signature is D major (two sharps). The time signature is 4/4. The tempo is marked 'Sostenuto'. The first measure is marked 'pp' (pianissimo). The notation includes a series of eighth notes in the bass clef and a series of quarter notes in the treble clef. Below the staff, there are five measures of rests, each marked with a 'Ped.' (pedal) symbol.

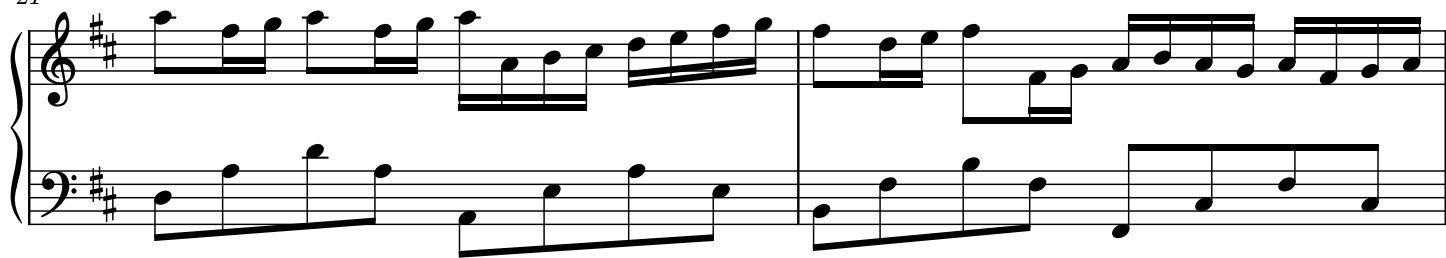
The second system of the piano arrangement for Canon in D. It features a grand staff with a treble and bass clef. The key signature is D major (two sharps). The time signature is 4/4. The tempo is marked 'Sostenuto'. The first measure is marked 'p' (piano). The notation includes a series of eighth notes in the bass clef and a series of quarter notes in the treble clef.

The third system of the piano arrangement for Canon in D. It features a grand staff with a treble and bass clef. The key signature is D major (two sharps). The time signature is 4/4. The tempo is marked 'Sostenuto'. The first measure is marked 'mp' (mezzo-piano). The notation includes a series of eighth notes in the bass clef and a series of quarter notes in the treble clef.

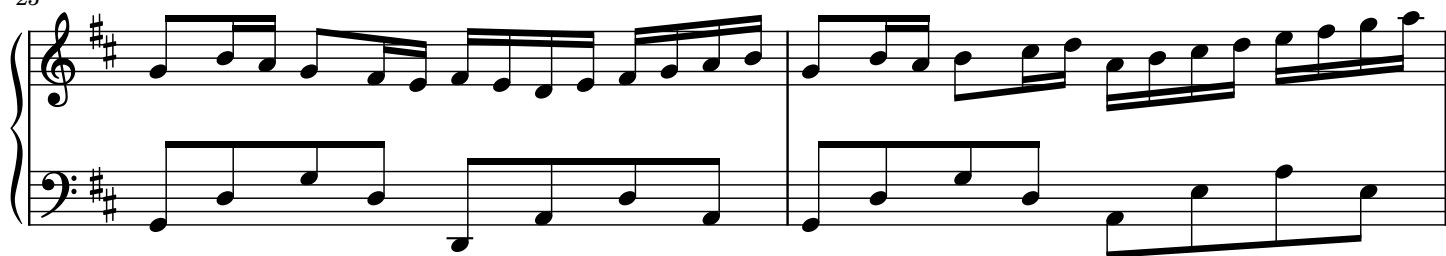
The fourth system of the piano arrangement for Canon in D. It features a grand staff with a treble and bass clef. The key signature is D major (two sharps). The time signature is 4/4. The tempo is marked 'Sostenuto'. The first measure is marked 'mf' (mezzo-forte). The notation includes a series of eighth notes in the bass clef and a series of quarter notes in the treble clef.

The fifth system of the piano arrangement for Canon in D. It features a grand staff with a treble and bass clef. The key signature is D major (two sharps). The time signature is 4/4. The tempo is marked 'Sostenuto'. The notation includes a series of eighth notes in the bass clef and a series of quarter notes in the treble clef.

21



23



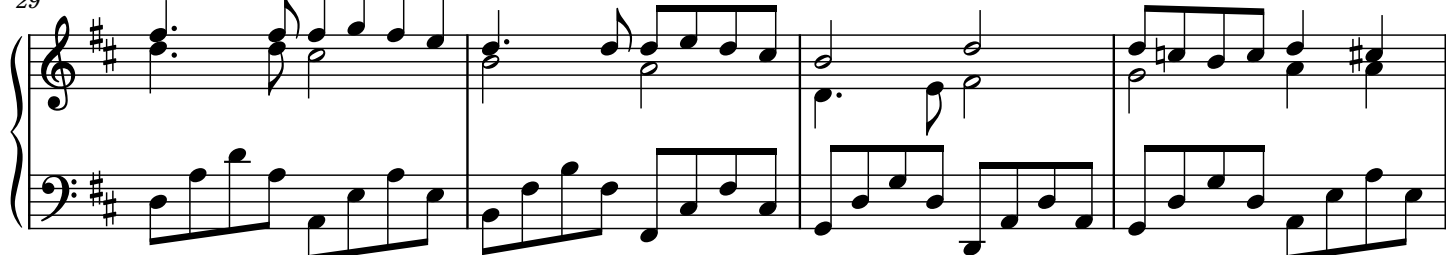
25



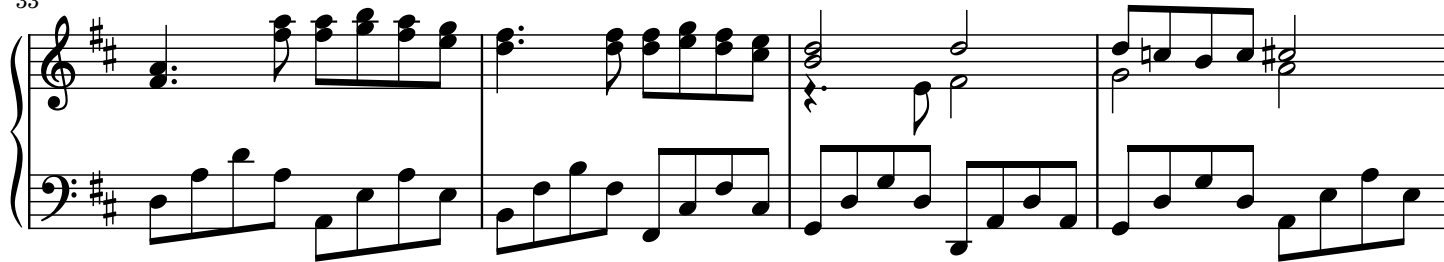
27



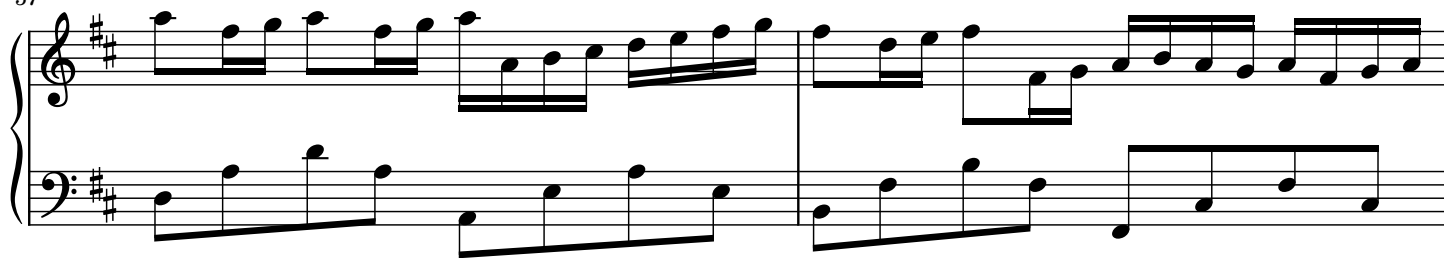
29



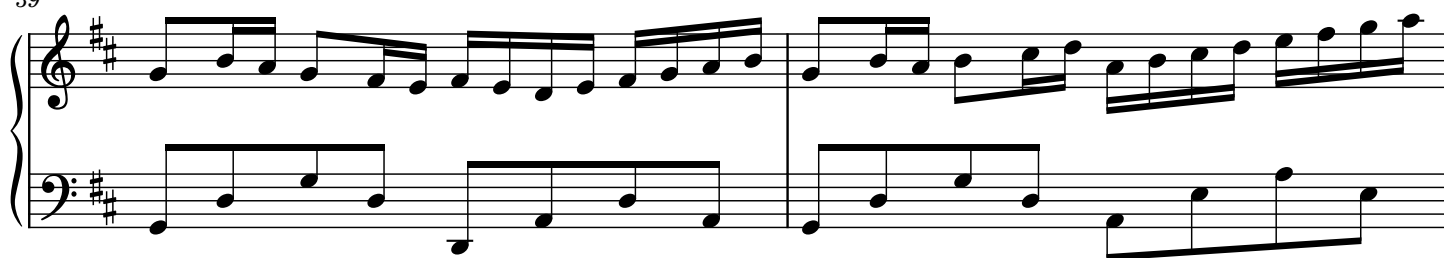
33



37



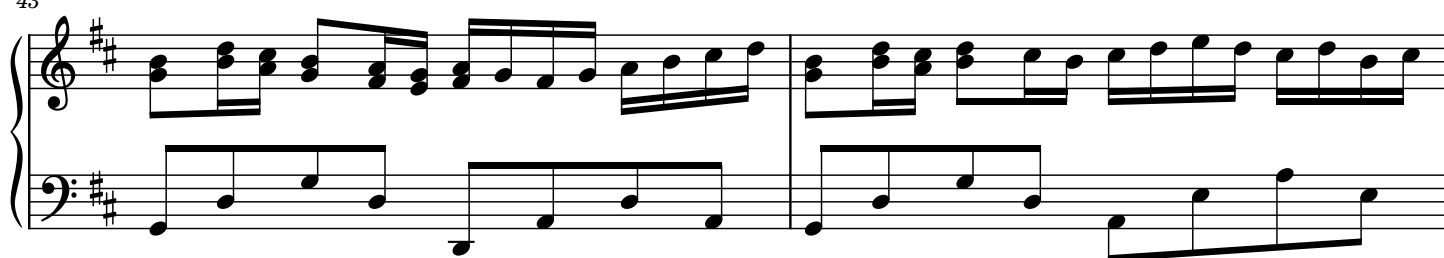
39



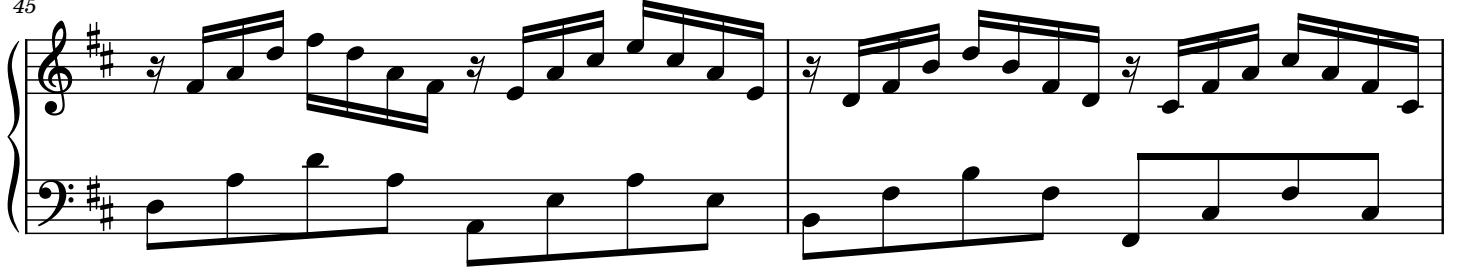
41



43



45



47

