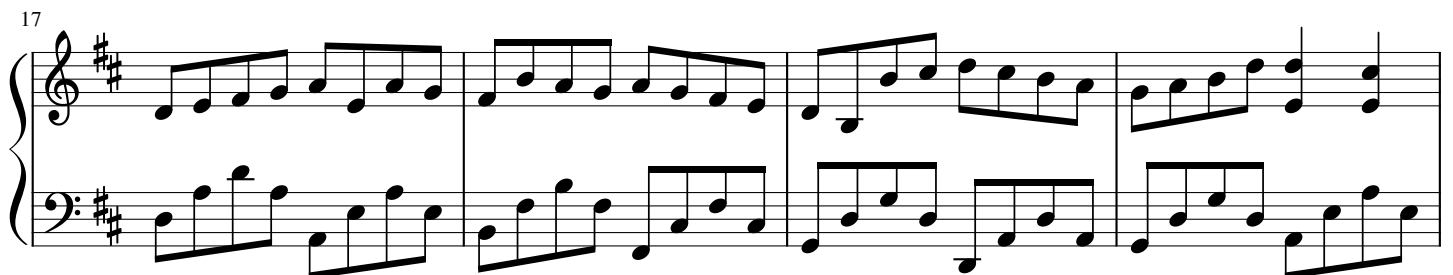
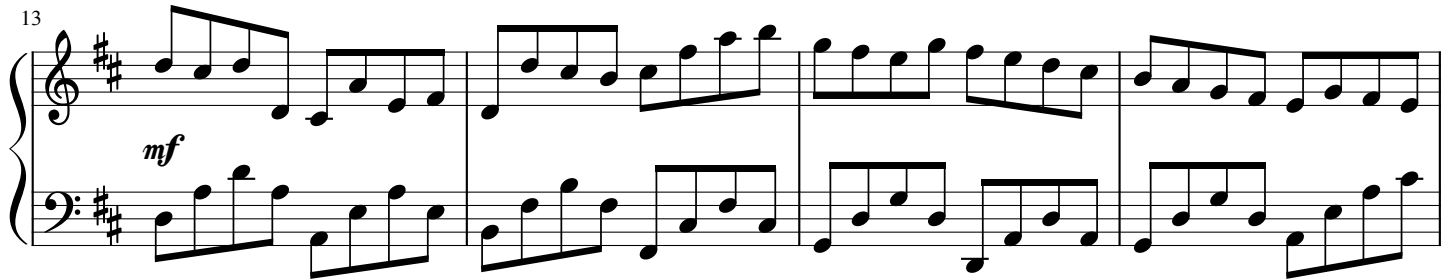


# Canon in D

Johann Pachelbel  
(1653 - 1706)  
Arr. Caner Başbuğa

Sostenuto



21

Measures 21 and 22 of a piano piece in D major. The right hand features a continuous eighth-note melody, while the left hand provides a steady eighth-note accompaniment.

23

Measures 23 and 24. The right hand continues with eighth-note patterns, and the left hand maintains the accompaniment.

25

Measures 25 and 26. A forte (*f*) dynamic marking is present in measure 25. The right hand introduces chords and eighth-note runs, while the left hand continues the accompaniment.

27

Measures 27 and 28. The right hand features a more complex pattern with chords and eighth notes, and the left hand continues the accompaniment.

29

Measures 29 through 32. The right hand has a more active role with chords and eighth-note runs, while the left hand continues the accompaniment.

33

Measures 33-36. The key signature is two sharps (F# and C#). The melody in the right hand features chords and eighth-note patterns, while the left hand plays a steady eighth-note accompaniment.

37

Measures 37-40. The right hand continues with eighth-note patterns, and the left hand maintains the eighth-note accompaniment.

39

Measures 39-42. The right hand features a more complex eighth-note melody, and the left hand continues the accompaniment.

41

Measures 41-44. A forte (*f*) dynamic marking is present in the first measure of the right hand. The right hand has a busy eighth-note melody, and the left hand continues the accompaniment.

43

Measures 43-46. The right hand continues with a complex eighth-note melody, and the left hand maintains the accompaniment.

45

Measures 45 and 46 of a piano piece in D major. The right hand features a continuous eighth-note melody with frequent beamed sixteenth-note pairs. The left hand provides a steady eighth-note accompaniment. The key signature has two sharps (F# and C#).

47

Measures 47 and 48 of the piano piece. Measure 47 continues the eighth-note patterns in both hands. Measure 48 concludes with a final chord in the right hand (F#4, A4, C#5) and a sustained bass note (D2) in the left hand. The piece ends with a double bar line.