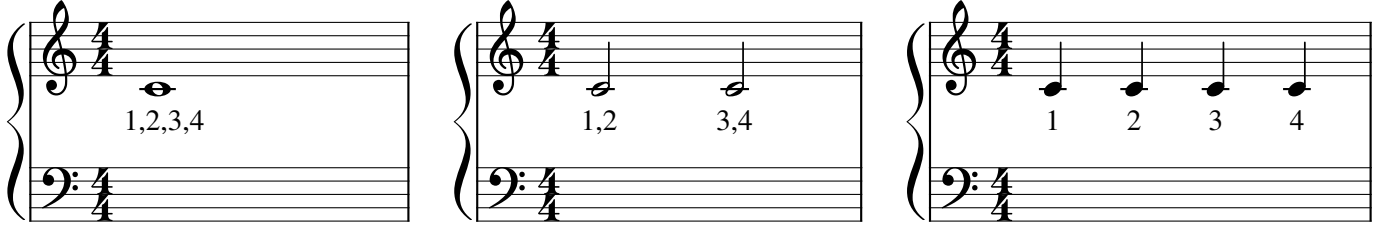


Müzik Alfabesine Giriş

Sağ ve Sol El - Orta Do Notası - Nota Süre Değerleri

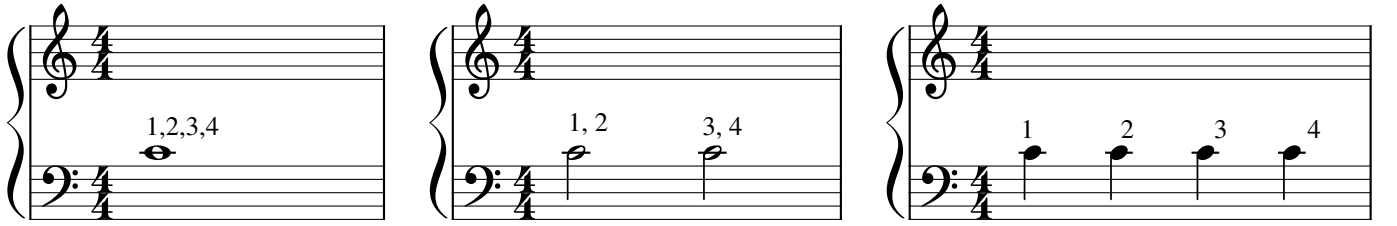
"Sağ Elde Do"

Caner Başbuğa



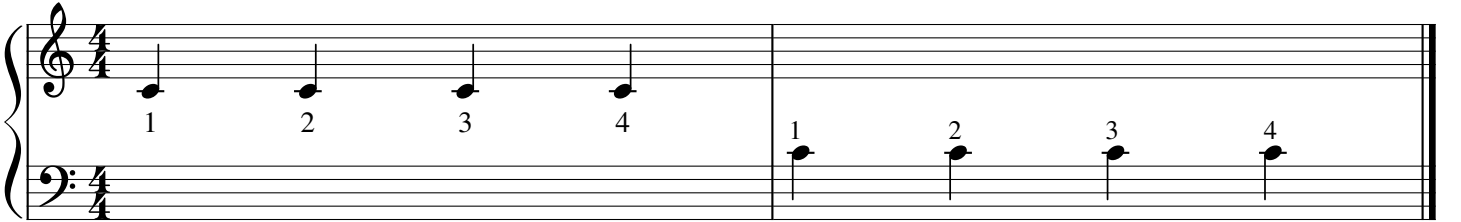
Caner Başbuğa

"Sol Elde Do"



Sağ - Sol El

Caner Başbuğa



Bu sayfadaki çalışmalar Caner Başbuğa tarafından yazılmıştır. İzinsiz ticari amaçlı kullanılması yasaktır.
Bu çalışmaların anlatımını ve piyano derslerimi youtube/canerbaşbuğa kanalından izleyebilirsiniz.

1. Teori Dersi

Caner Başbuğa

1. Ağırtırma (2 zamanlı)

Musical notation for the first exercise in 2/4 time. It consists of four measures. Measure 1: Right hand plays 'Sağ' (1) and 'do' (2). Measure 2: Left hand plays 'sol' (1) and 'do' (2). Measure 3: Right hand plays 'sağ' (1) and 'do' (2). Measure 4: Right hand plays 'DOO' (1,2).

Musical notation for the second exercise in 2/4 time. It consists of four measures. Measure 1: Left hand plays 'Sol' (1) and 'do' (2). Measure 2: Right hand plays 'sağ' (1) and 'do' (2). Measure 3: Left hand plays 'sol' (1) and 'do' (2). Measure 4: Right hand plays 'DOO' (1,2).

2. Ağırtırma (4 zamanlı)

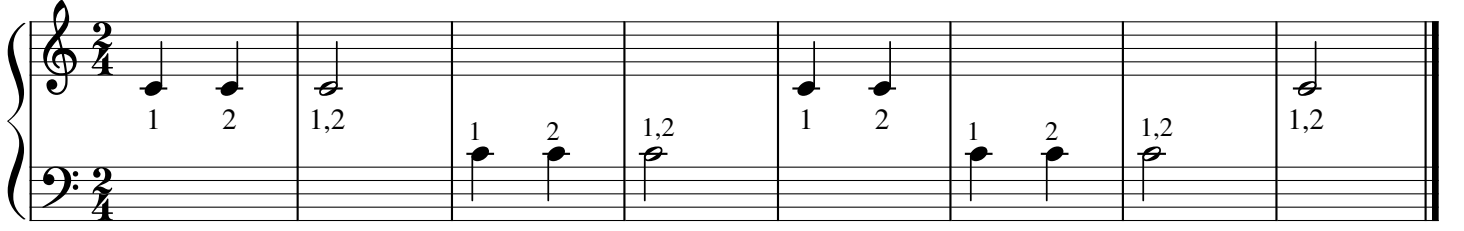
Caner Başbuğa

Musical notation for the third exercise in 4/4 time. It consists of four measures. Measure 1: Right hand plays 'Sağ' (1), 'do' (2), 'do' (3), 'do' (4). Measure 2: Left hand plays 'Sol' (1), 'do' (2), 'do' (3), 'do' (4). Measure 3: Right hand plays 'Sağ' (1), 'do' (2), 'Sol' (3), 'do' (4). Measure 4: Right hand plays 'Sağ' (1), 'Sol' (2), 'DOO' (3,4).

Musical notation for the fourth exercise in 4/4 time. It consists of four measures. Measure 1: Left hand plays 'Sol' (1), 'do' (2), 'do' (3), 'do' (4). Measure 2: Right hand plays 'Sağ' (1), 'do' (2), 'do' (3), 'do' (4). Measure 3: Left hand plays 'Sol' (1), 'do' (2), 'Sağ' (3), 'do' (4). Measure 4: Left hand plays 'Sol' (1), 'Sağ' (2), 'DOO' (3,4).

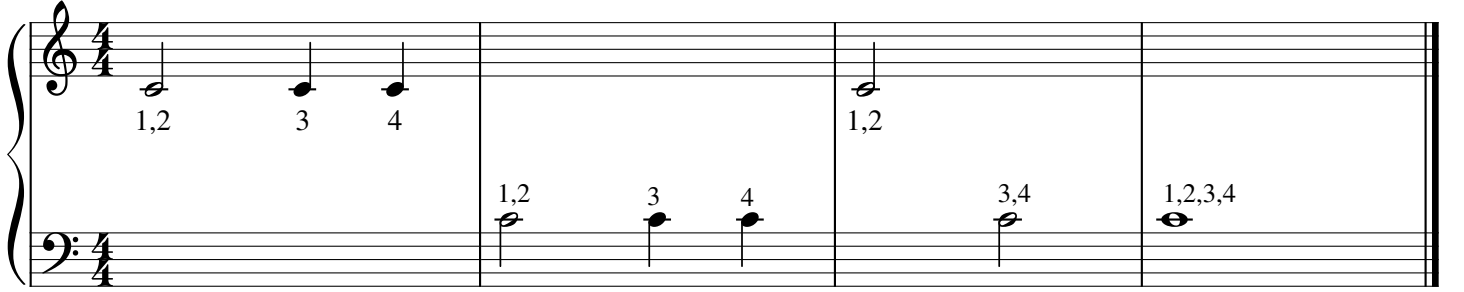
3. Ağıştırma

Caner Başbuğa



4. Ağıştırma

Caner Başbuğa



5. Ağıştırma

Caner Başbuğa

